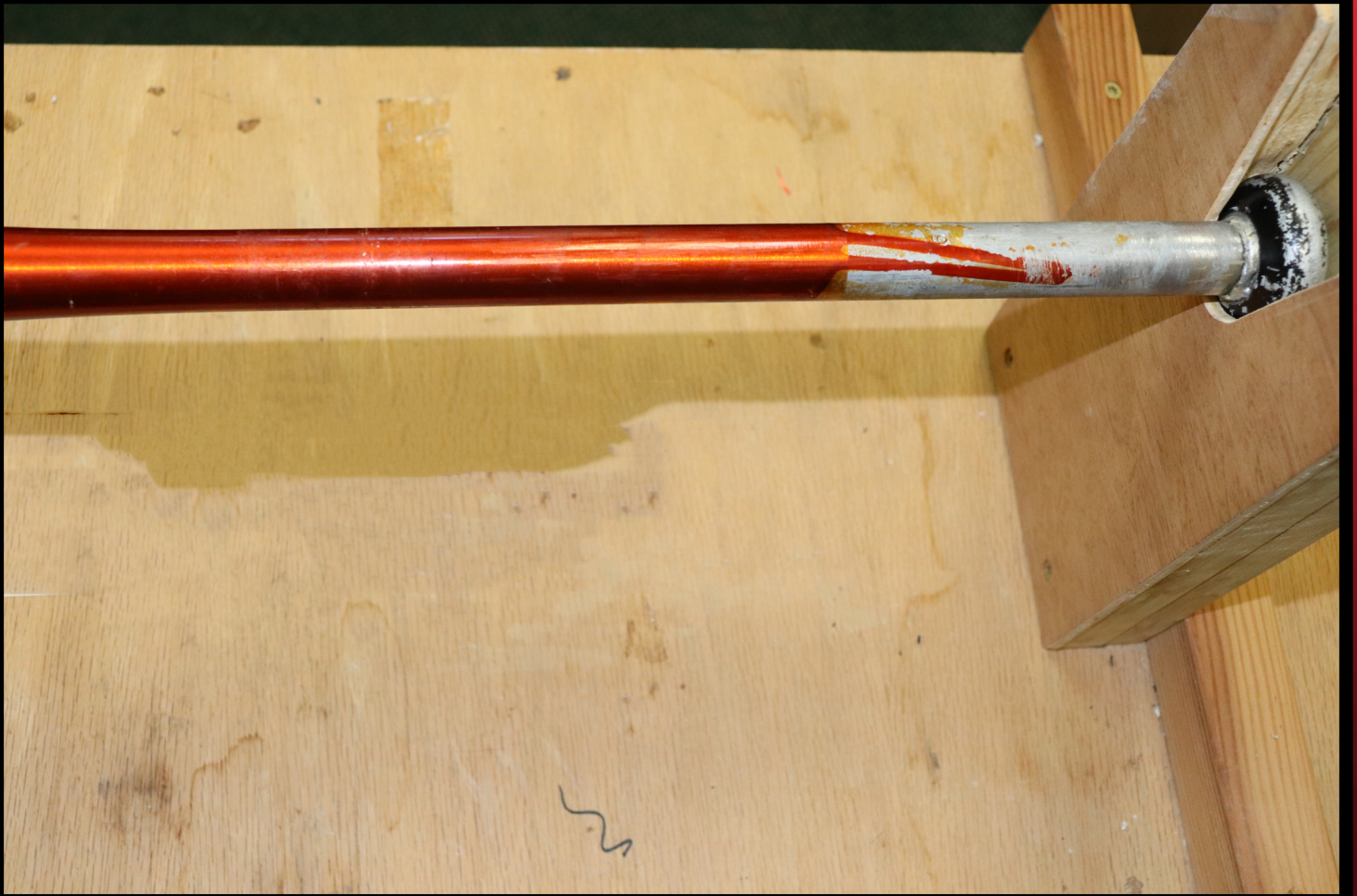


SHOWTIME

USA

ALUMINUM BAT SHOWTIME GRIP INSTALLATION



STEP 1

START BY REMOVING THE OLD GRIP FROM THE BAT, AND COMPLETELY CLEANING THE BAT HANDLE OF EXCESS GLUE AND DIRT.

SHOWTIME

USA

ALUMINUM BAT SHOWTIME GRIP INSTALLATION



STEP 2

TAKE THE CUSTOM SHOWTIME LABEL AND REMOVE BACK LINER. ALIGN LABEL FROM HANDLE BUTT END TO TOP END, MAKING SURE IT IS STRAIGHT , AND APPLY TO BAT HANDLE.

SHOWTIME

561-439-0009

ALUMINUM BAT SHOWTIME GRIP INSTALLATION



STEP 3

TAKE SHOWTIME GRIP AND PARTIALLY REMOVE BACK LINER. POSITION GRIP AT BUTT END OF BAT HANDLE (CUT SIDE AGAINST BUTT) AND BEGIN TO WRAP AROUND BAT HANDLE UNTIL IT REACHES DESIRED GRIP HEIGHT ON HANDLE. IF EXCESS MATERIAL REMAINS, CUT OFF EXCESS AT SAME ANGLE AS EXSISTING CUT

SHOWTIME

UG-45

ALUMINUM BAT SHOWTIME GRIP INSTALLATION



STEP 4

WHEN GRIP IS COMPLETELY ON BAT HANDLE, TAKE SELF ADHESIVE TAPE STRIP (1 PROVIDED) AND WRAP AROUND TOP END HALF ON GRIP / HALF ON HANDLE TO SECURE THE GRIP END.